

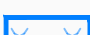


PLAN 1 : TRAVAUX 2003

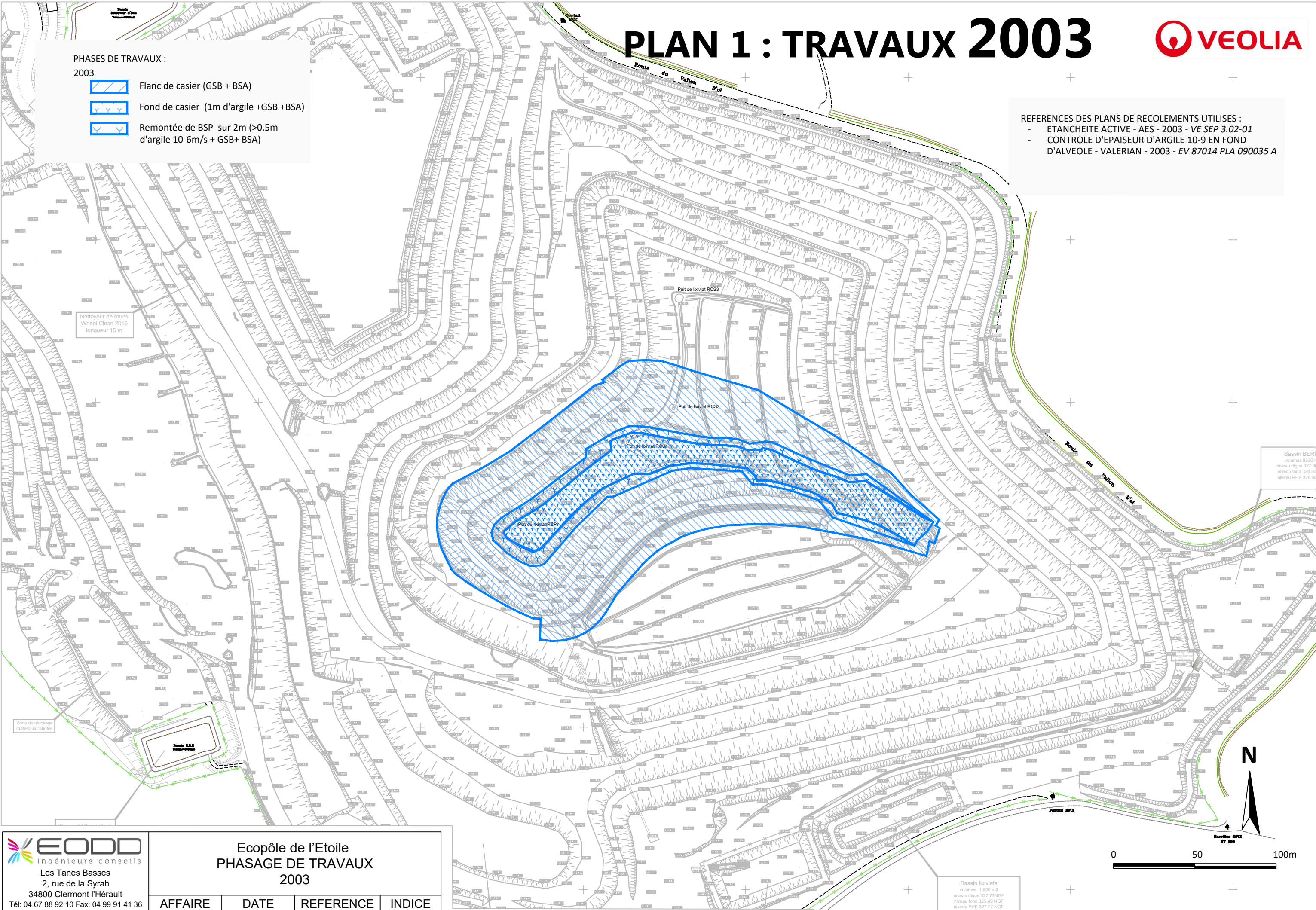


PHASES DE TRAVAUX :

2003

-  Flanc de casier (GSB + BSA)
-  Fond de casier (1m d'argile +GSB +BSA)
-  Remontée de BSP sur 2m (>0.5m d'argile 10-6m/s + GSB+ BSA)

- REFERENCES DES PLANS DE RECOLEMENTS UTILISES :
- ETANCHEITE ACTIVE - AES - 2003 - VE SEP 3.02-01
 - CONTROLE D'EPaisseur D'ARGILE 10-9 EN FOND D'ALVEOLE - VALERIAN - 2003 - EV 87014 PLA 090035 A



AFFAIRE	DATE	REFERENCE	INDICE
P02971	21/04/2021	001	0